

# GWM / RDF

## RECYCLING SOLUTIONS



*- More Than Business -*

# OVER 40 YEARS OF EXPERIENCE IN RECOVERY SOLUTIONS

MTB is considered a pioneer in the **recycling of tomorrow's waste**. Conscious of our planet's future, the company has built its development strategy around the values of "zero waste, premium quality and for our children". As an **operator** and **manufacturer**, MTB is highly qualified in the management of complex industrial waste.

**Why trust us?** All MTB equipment is first tested and proven on our recycling site before being offered to our customers!

Integrating **complete, turnkey solutions**, MTB simplifies the treatment and recovery of deposits with different compositions, and optimizes preparation and sorting processes to produce homogeneous, **high-quality RDF**.

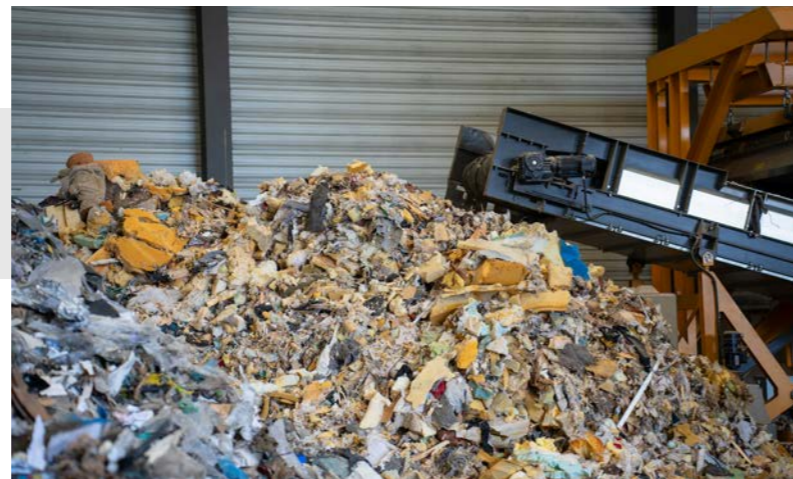


A proportion of **CIW**, common industrial waste, is in fact an energy resource when it is transformed into **RDF**, reconstituted solid fuels. Recovered in furnaces, they must meet the **specific requirements** of their users.

## COMPLETE EXPERTISE

Our experiences have made us experts of the entire value chain.

- ↳ **Manufacturing** our own equipment
- ↳ Engineering **turnkey solutions**
- ↳ Partner **system integration**



## FLEXIBLE, CUSTOMIZED SOLUTIONS

- ↳ Depending on **volume, composition** of deposits and **desired outputs**
- ↳ Homogeneous output products suitable for recycling and energy recovery

# OUR REFERENCES



They trust us: **EXCOFFIER, BAUDELET, BIOVAL, EMREC GmbH, ENERGESMAN**

## FROM CIW TO RDF

- 1 PREPARATION**
  - ↳ Pre-shredding
  - ↳ Shredding
- 2 MATERIAL SORTING**
  - ↳ Granulometric separation
  - ↳ Aeraulic sorting
  - ↳ Magnetic separation
  - ↳ Optical sorting
  - ↳ Manual sorting
- 3 CONDITIONNING**
  - ↳ Granulation
  - ↳ Baling
  - ↳ Quality control

# INPUT MATERIALS

- Non-hazardous economic waste
- Bulky waste from landfill sites and from waste collection centers
- Common industrial waste (**CIW**)
- Construction & demolition debris
- Non-recycled and non-hazardous high-LHV (Lower Heating Value) waste, such as from solid waste sorting rejects:
  - SC (Selective Collection) sorting centers
  - Composting or methanization sorting units
  - Residual household waste (RWH) sorting centers - dry part
  - Automotive shredder residue (ASR)...

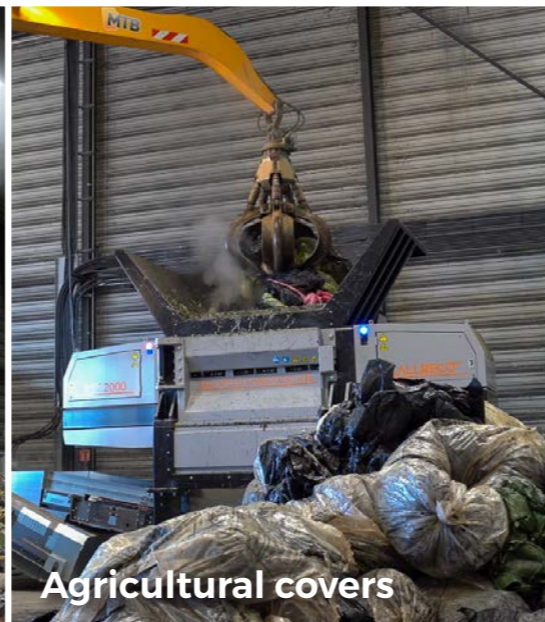
Some examples on site :



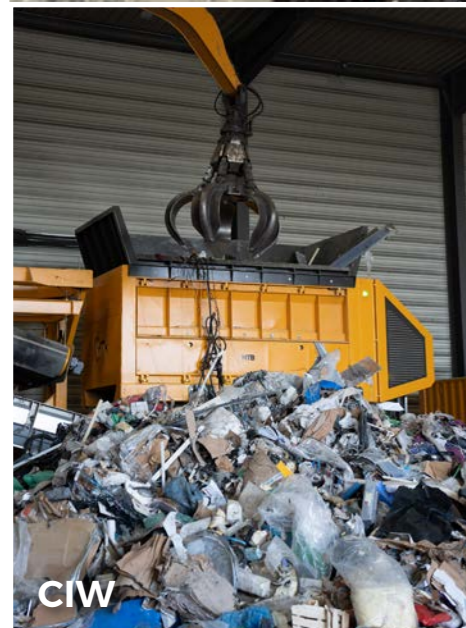
Plastics



Foam



Agricultural covers



CIW



ASR



Bulky waste

**MATERIAL RECOVERY ENABLES THE SEPARATION OF DIFFERENT MATERIALS**  
(WOOD, PLASTICS, METALS, PAPER, CARDBOARD, GLASS, ETC.)



## WASTE-TO-ENERGY



# OUTPUT PRODUCTS

Depending on the type of energy recovery, fragment size, quality and RDF packaging play a decisive role.

For example, we offer:

### RDF

- ↳ Energy recovery for boilers
- ↳ Less than **80 mm**
- ↳ **12MJ/kg < LHV < 18MJ/kg**
- ↳ Chlorine **< 1.5%**



+ Possible packaging in the form of aggregates

### HIGH-QUALITY RDF

- ↳ Mainly used in cement plants
- ↳ Between **10 mm** and **30 mm**
- ↳ **LHV > 18MJ/kg**
- ↳ Chlorine **< 0.5%**

# FROM MATERIALS SORTING TO ENERGY RECOVERY

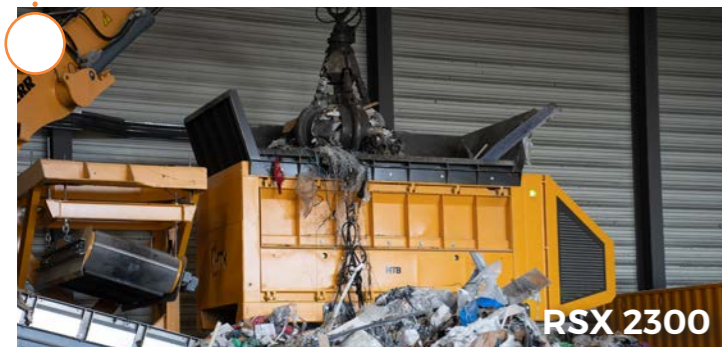
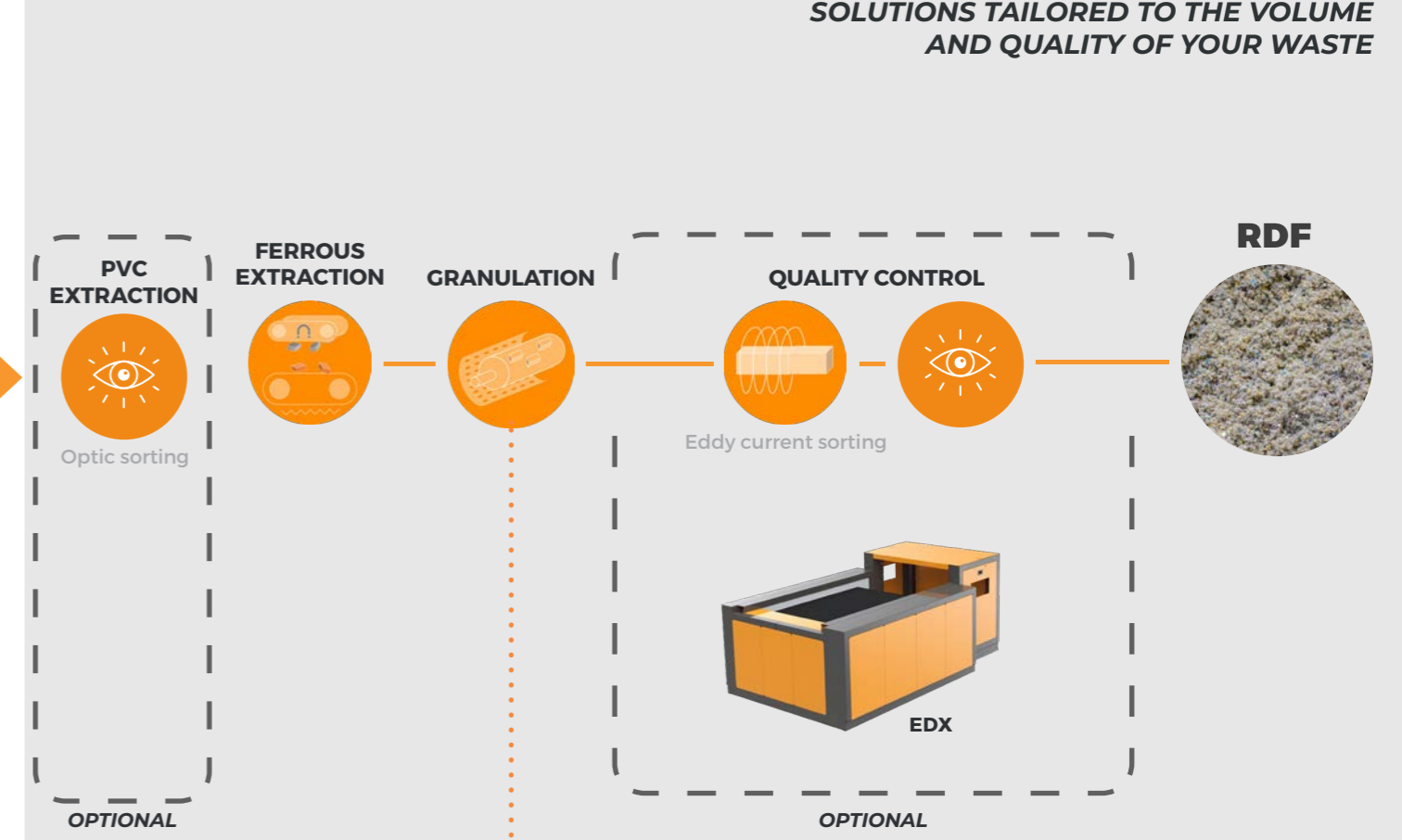
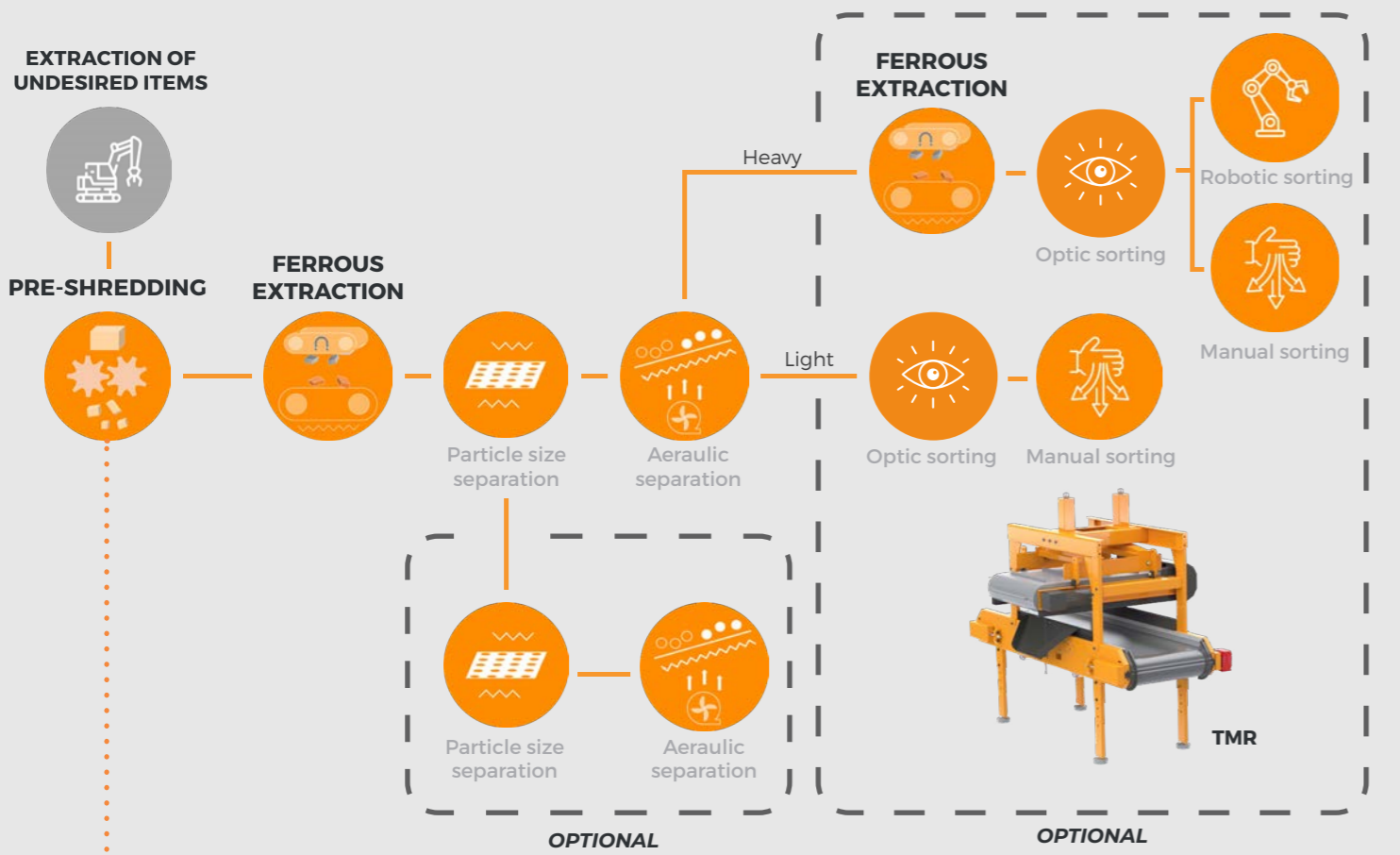
We can offer you specific pre-shredding, shredding, and granulation solutions based on the nature of your incoming materials, optimizing the value of your waste.

## RECYCLING PROCESS

SOLUTIONS TAILORED TO THE VOLUME AND QUALITY OF YOUR WASTE

THROUGHPUT UP TO 35 T/hour

THROUGHPUT UP TO 20 T/hour



RSX 2300

### OPTIONS:

- Recovery of fines
- Material recovery between heavy and light items
- Integration of manual / robotized / optical solutions



BST 2000

### OPTIONS:

- PVC extraction (chlorinated elements)
- Continuous quality control
- Extraction of non-ferrous metals

## A COMPLETE RANGE

- + **Reduced energy consumption:** up to 35% compared with hydraulic motors\*
- + **Reduced noise emissions** thanks to our choice of synchronous motors
- + **Energy efficiency** of our machines exceeds 90%
- + **Easy maintenance** for optimum machine availability
- + **Reduced operating costs (OPEX)** thanks to the specific and ingenious design of our equipment and wear parts (fewer consumables)

### PRE-SHREDDING

- + Efficient crushing thanks to **hybrid technology** (shear and ripper)
- + Large reversible hopper

### SHREDDING / GRANULATION

- + Shredding and granulation in **one single pass**
- + Optimum and **homogeneous granulation** up to 10 mm
- + **Modular drive** according to application: 1 to 2 motors (176 to 352 kW)
- + Two **alternating** electric pushers for greater throughput

\*and up to 15% compared to asynchronous electric motors

# CUSTOMER SUPPORT

## INSTALLATION - MTB SERVICE

Our specialized technicians are experts in the installation and repair of our equipment, guaranteeing fast, efficient service anywhere in the world.

## CUSTOMER SERVICE

We're at your side to advise, troubleshoot and supply spare parts as quickly as possible.

## TRAINING & COACHING

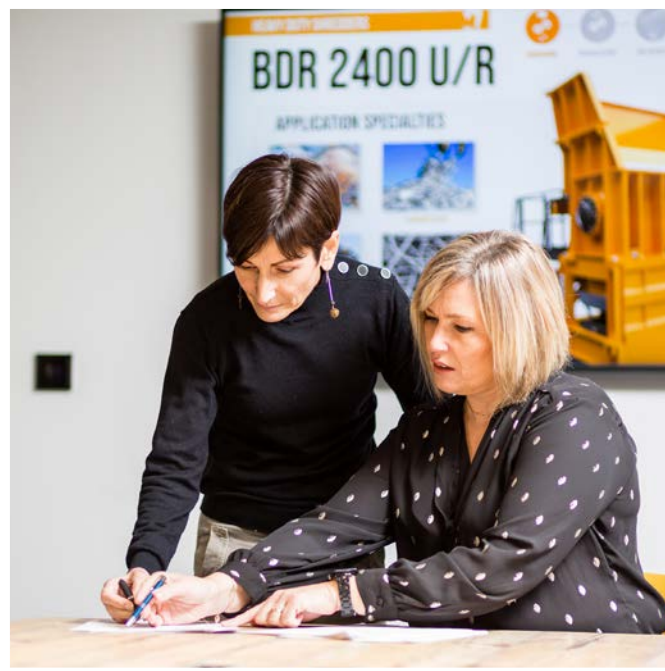
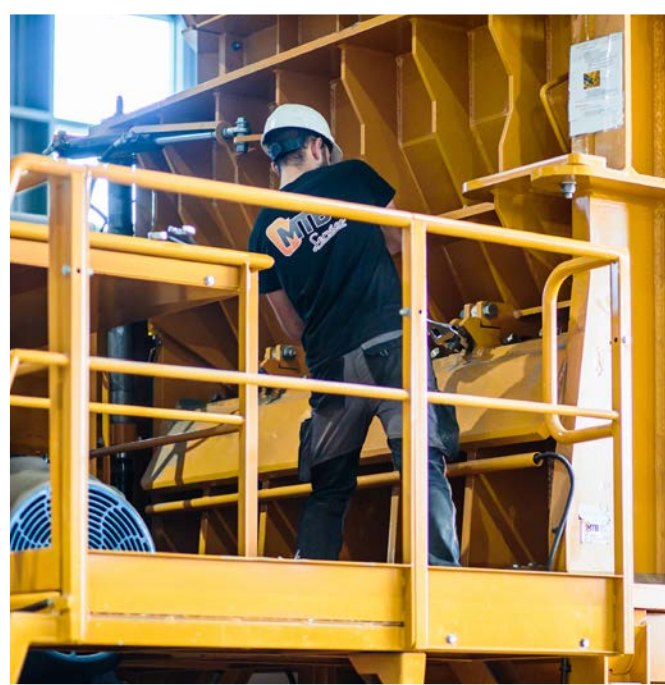
Our experts will train you prior to machine commissioning and provide you with all the keys to a successful start-up.

## MYMTB

Our application helps you achieve greater efficiency by providing real-time production data, tracking history and much more.

## ECO-DESIGN SUPPORT

Our eco-innovation team supports manufacturers in their circular economy initiatives.



Visit our website

[www.mtb.fr](http://www.mtb.fr)



**Address :** Parc d'activités des Balmes Dauphinoises, 38890, Saint-Chef, FRANCE

**Mail :** [info@mtb.fr](mailto:info@mtb.fr)

**Phone :** +33 474 928 768