



# CABLEBOX

## The SHRED' BOX

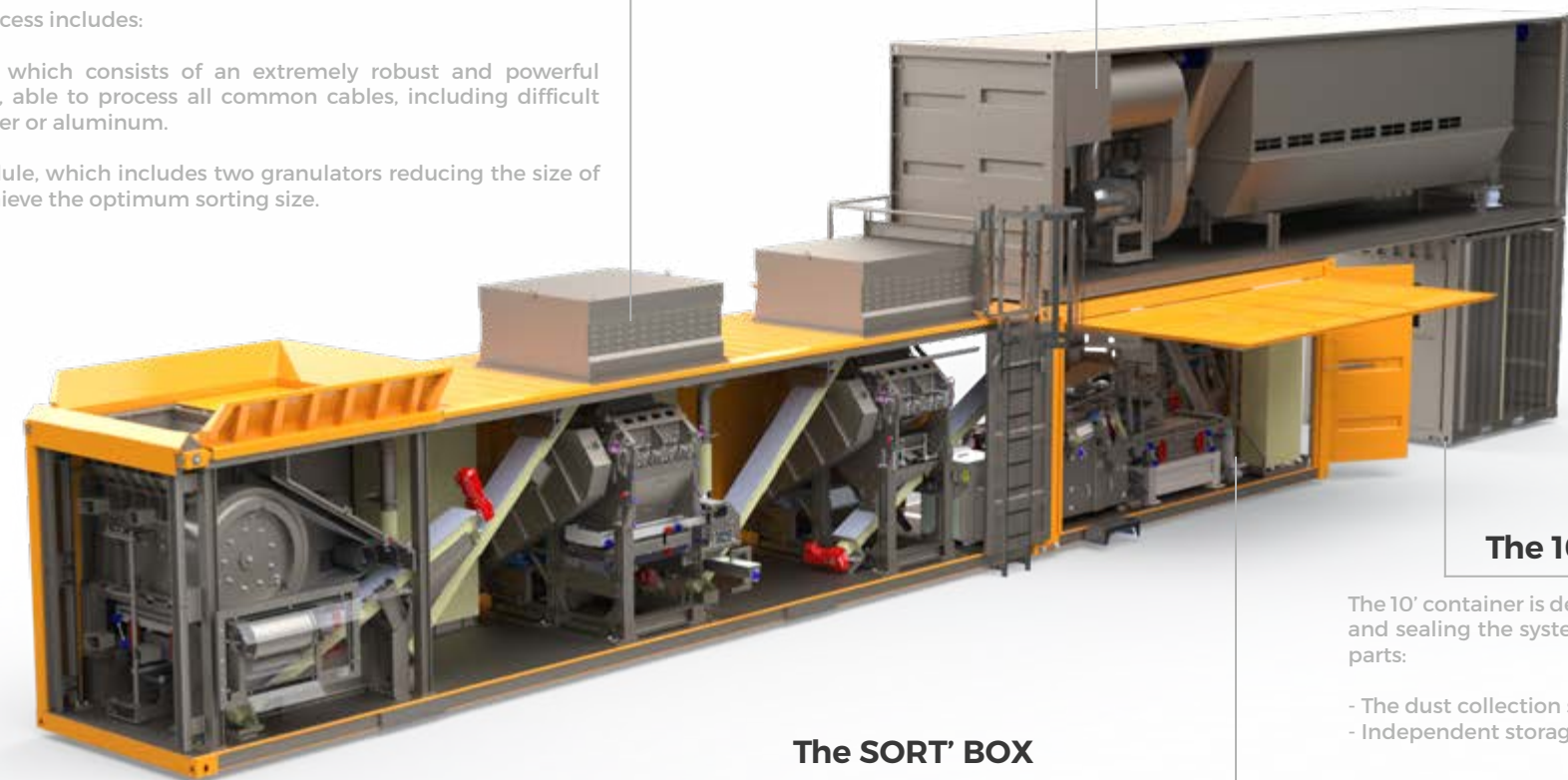
This part of the process includes:

A shredding unit, which consists of an extremely robust and powerful compact shredder, able to process all common cables, including difficult cables, either copper or aluminum.

A granulation module, which includes two granulators reducing the size of the material to achieve the optimum sorting size.

## The AIR' BOX

In order to maintain a quick process and easy installation procedures, MTB has equipped the system with an air filtration unit in a separate container. Despite its relative compactness, the AIR'BOX contains a powerful dust collection system essential for an optimized separation of products.



## The 10' CONTAINER

The 10' container is dedicated to dust collection and sealing the system. The box is divided in 2 parts:

- The dust collection section
- Independent storage for spare parts or tools

## The SORT' BOX

This space is composed of density air tables, sieving tables and magnetic pulleys, which is similar to larger scale recycling lines. It allows the recovery of sorted material at the end of the process as follows: ferrous scrap, big copper nugget, copper fine fraction, caps (aluminum, brass, tin) and plastic.

## Our recycling box solutions

### Plug'n'run

Ready to use, our range of boxes integrate a complete recycling line within combined containers.

Compact, mobile, efficient and economical, the BOX's achievement is to retain all the equipment of a standard MTB recycling line and condense it all in containers.

This concept of Plug'n'Run is fully integrated and ready for use without any assembly operation required. Only a connection of containers will be necessary.

Equipment that is easily transportable and offers fast commissioning.

## APPLICATION SPECIALTIES



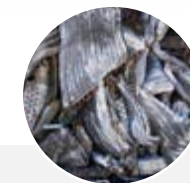
CABLES



SHREDDED WIRES



TRANSFORMER WIRE



RADIATORS

**CAPACITY**  
From 1 to 5 T/h



## COMPOSITION



Compact Shredder : BDR 1245



x2 Compact Granulators :  
BAT 845



x2 Air Density Tables :  
T600 x 1200



x2 Sieving Tables :  
TAM 700



Magnetic Separator

## Advantages

### COMPACT & GREEN

- Turnkey cable recycling line within containers
- Designed with an enclosed style system to reduce dust emissions drastically
- Intuitive and integrated monitoring system

### MINIMUM SIZE - MAXIMUM EFFICIENCY

- Feeding either by crane or dosing conveyor
- MTB's Heavy Duty machines
- Designed to reach up to 3 metric tons per hour capacity - may vary upon cable quality
- Output products: ferrous, non-ferrous and plastic

### PLUG & RECYCLE

- User-friendly, just plug in and start recycling
- 1 assembly operation only: the external 11 770 CFM dust extraction unit (20 000 m3/h)
- Personalized customer support: Training of operators before BOX installation

### OPTIONS

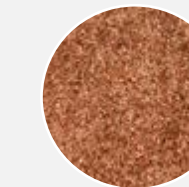
- Hydraulic system for BDR 1245 and swing doors
- Set of output belts conveyor or screws conveyors for easy conditioning of chops
- Plastic screening stage
- Automatic bin feeder with visual control and level sensor



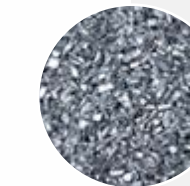
## CLASSIFIED OUTPUT PRODUCTS\*



BIG COPPER



FINE COPPER



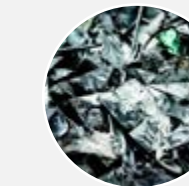
ALUMINUM



NFE FLAKES



PLASTIC



FERROUS INSERT

\*Classified non ferrous grades, ferrous, plastics



# CABLE BOX®



# Technical Data



| TECHNICAL DATA   | CABLEBOX          | SHRED'BOX 40'     | SORT'BOX 20'     | AIR'BOX 40'       | 10' CONTAINER  | Main equipment specs. |                  |
|------------------|-------------------|-------------------|------------------|-------------------|----------------|-----------------------|------------------|
|                  |                   |                   |                  |                   |                | PRESHREDDER           | GRANULATOR       |
| Length           | 80' 05" / 24,40 m | 39' 12" / 12,19 m | 19' 10" / 6,06 m | 39' 12" / 12,19 m | 9' 8" / 2,99 m | -                     | -                |
| Width            | 8' / 2,44 m       | 8' / 2,44 m       | 8' / 2,44 m      | 8' / 2,44 m       | 8' / 2,44 m    | -                     | -                |
| Height           | 19' 20" / 5,80 m  | 9' 6" / 2,90 m    | 9' 6" / 2,90 m   | 9' 6" / 2,90 m    | 9' 6" / 2,90 m | -                     | -                |
| Power            | 500 Hp / 375 kW   | 345 Hp / 253 kW   | 35 Hp / 26 kW    | 125 Hp / 90 kW    | -              | 125 Hp / 90 kW        | 100 Hp / 75 kW   |
| Weight           | 121 000 lb / 54T  | 66 000 lb / 31 T  | 22 000 lb / 9T   | 24 000 lb / 11T   | 6 600 lb / 3T  | 16 000 lb / 7,5T      | 12 000 lb / 5,5T |
| Cutting diameter | -                 | -                 | -                | -                 | -              | 16.5" / 415 mm        | 24" / 607 mm     |
| Rotor length     | -                 | -                 | -                | -                 | -              | 49" / 1 245 mm        | 32" / 800 mm     |
| Blades           | -                 | -                 | -                | -                 | -              | 24                    | 28               |

Non contractual data

