

8 KEY POINTS

MTB Group
Parc d'Activités des Balmes Dauphinoises
3553 route de Chamont
38890 Saint-Chef - FRANCE
www.mtb.fr



More Than Business

MTB ecosystem

20 hectares in Northern Isère (Saint-Chef & Trept) to host our current and future infrastructures, in order to pursue the deployment of an ambitious and caring industrial project.

The recycling plant

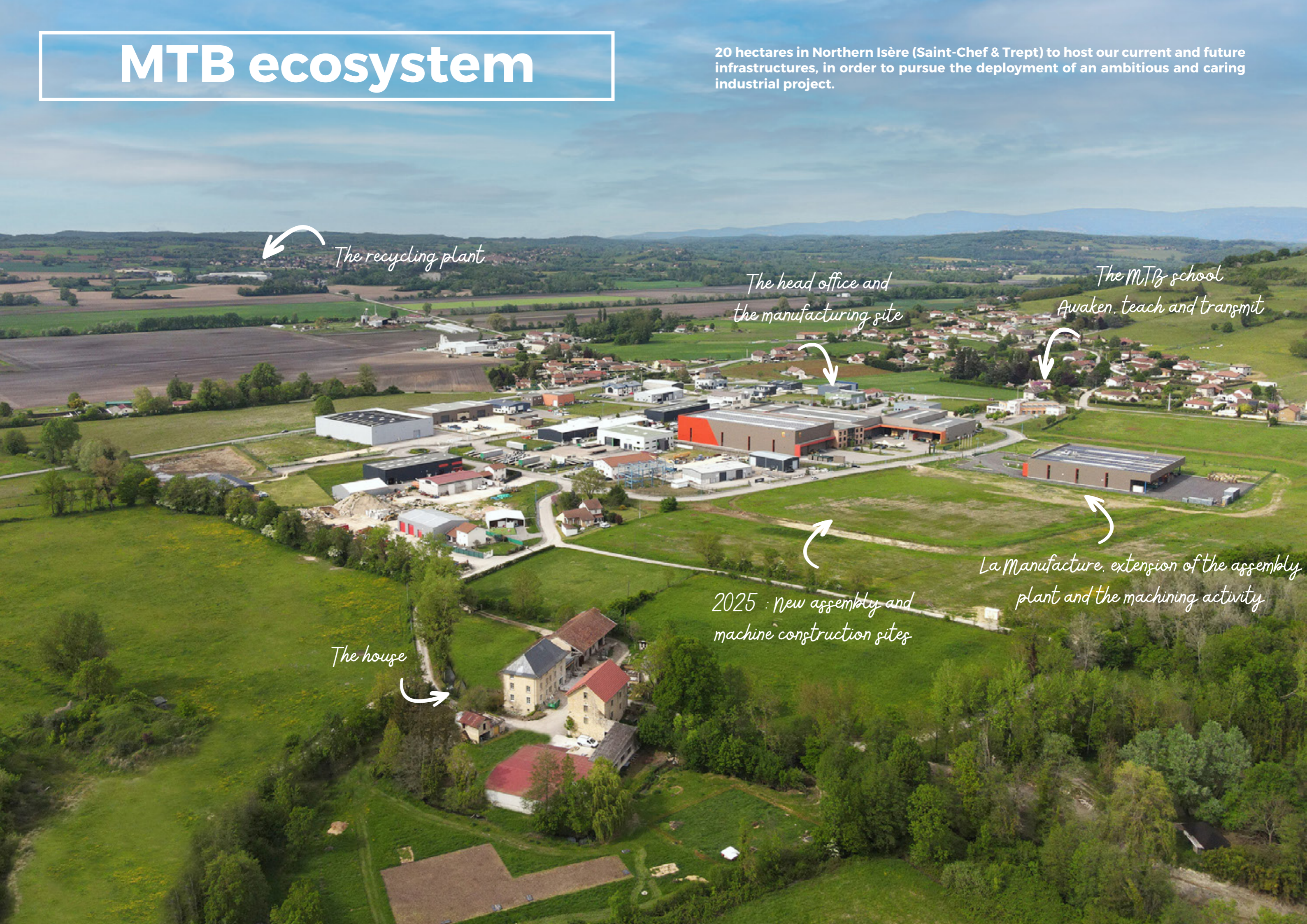
*The head office and
the manufacturing site*

*The MTB school
Awaken, teach and transmit*

*La Manufacture, extension of the assembly
plant and the machining activity*

*2025 : new assembly and
machine construction sites*

The house



1. Our specificity

1 GROUP - 4 AREAS OF EXPERTISES

Recycle, Design, Manufacture, Support



2. Superior quality

CREATOR OF STRATEGIC RESOURCES WITH LOW ENVIRONMENTAL IMPACT

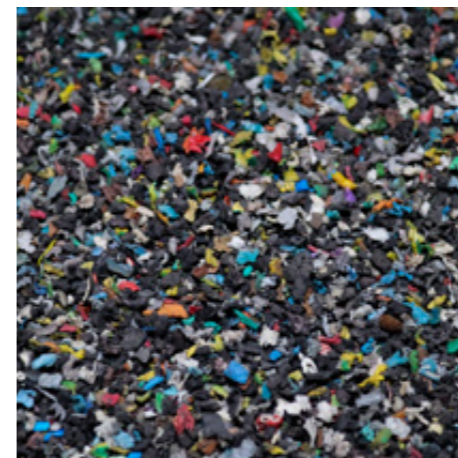
Copper



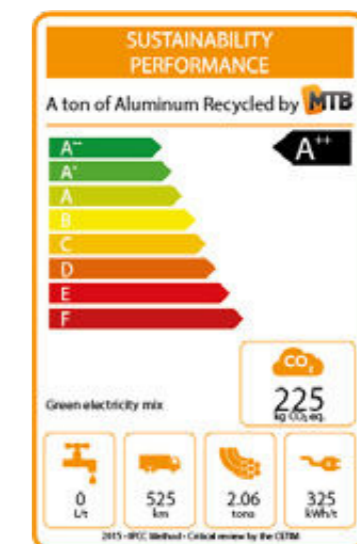
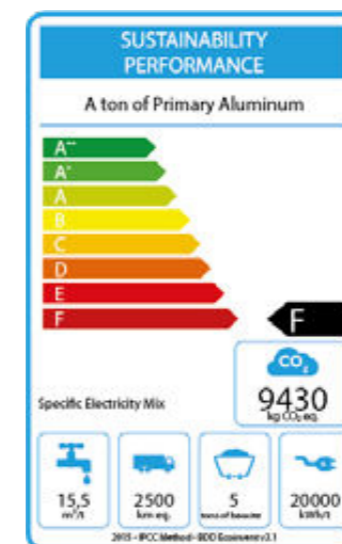
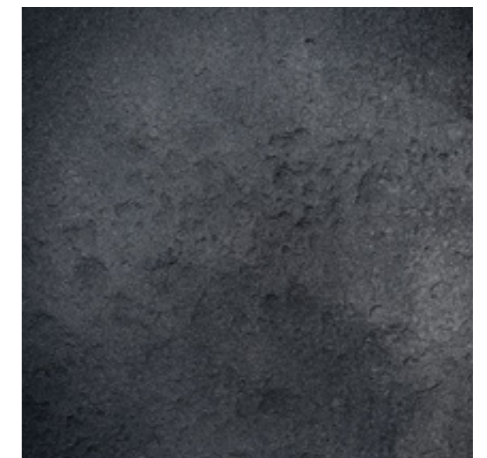
Aluminum



Plastic



Blackmass



Impact of MTB processes reduced by **40%** vs standard industry

3. Our customer service

LISTENING, TECHNICAL EXPERTISE AND SUPPORT

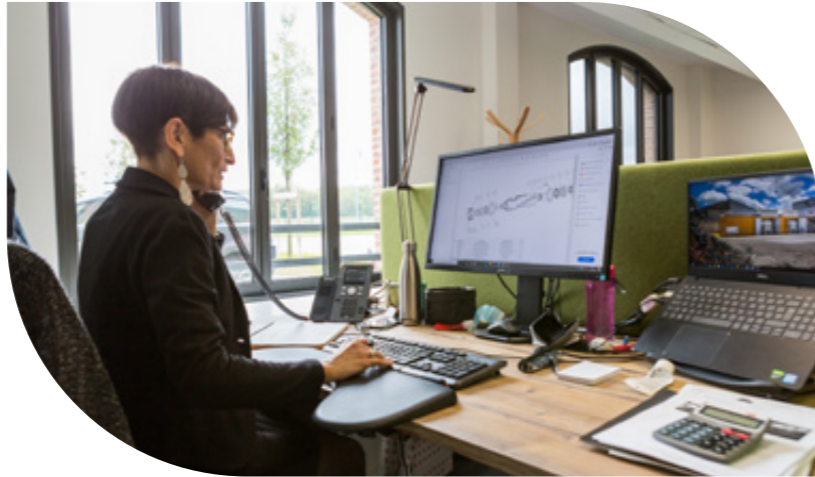
TRAINING AND COACHING

Experts train you before the machines are put into operation to give you the keys to success.



CUSTOMER SERVICE

At your service to provide advice, organize a breakdown service and supply you with wear parts with a short lead time.



INSTALLATION - MTB SERVICE

Technicians specialized in the installation and breakdown of our equipment with the ability to operate quickly all over the world.



4. Our key figures

MTB, A FRENCH PLAYER WITH INTERNATIONAL INFLUENCE

125 M€
TURNOVER 2022

230
EMPLOYEES

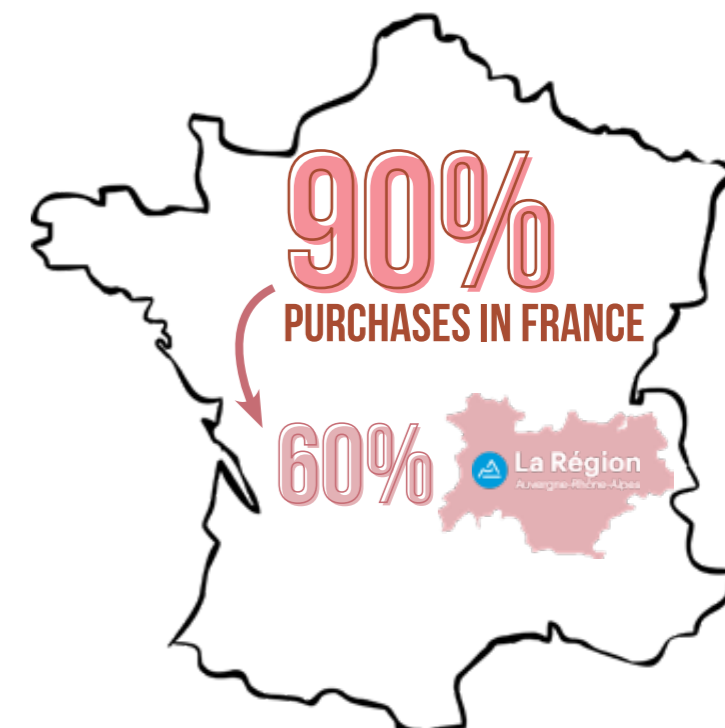
90%
TURNOVER FROM
INTERNATIONAL MARKETS

50 000T
RECYCLING CAPACITY IN FRANCE



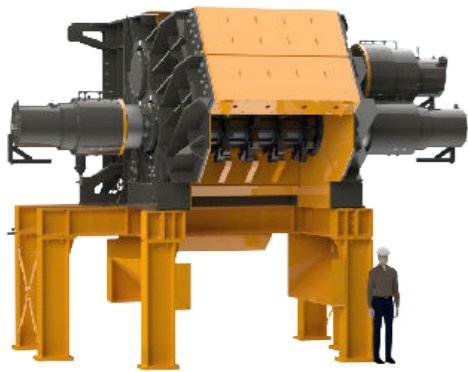
8%
TURNOVER
INVESTED IN R&D

5 000
MACHINES INSTALLED IN
THE WORLD



5. Our range of equipment

**40 MODULAR AND VERSATILE MACHINES,
ADAPTED TO A WIDE RANGE OF INDUSTRIES.**



Pre-shredders

EZR

Available in modular version
4 models with energy
efficient drive



Shredders

BDR - BVR

Available with HD option
9 models



Rotary shears

RSX

Available in Ripper, E-scrap
and mining tire versions



Granulators

SRP - BAT

Available with HD option
6 models



Vertical mill

BTR

3 models with energy
efficient drive



Sorting equipment

Densimetric, magnetics,
sieves and eddy current



A catalog of machines for customized solutions

Each line designed by MTB is adapted to the customer's waste for optimal recovery. Our team of experts, composed of sales representatives, designers and project managers, is constantly innovating to develop new waste treatment solutions. We have chosen to combine all our skills and capitalize on our 40 years of experience to better support our customers.

6. Our Box range

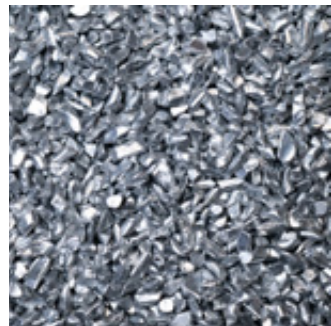
**A RANGE OF RECYCLING LINES:
COMPACT & MOBILE!**



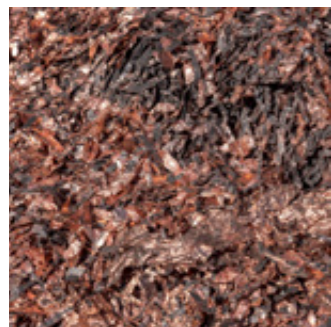
 **CABLE BOX[®]**



 **CABLE B1X[®]**



 **TIRE BOX[®]**



 **GATOR BOX[®]**

 **UPGRADE BOX[®]**

 **DRYCELL BOX[®]**



**Recycling solutions
turnkey in 1 or 4 containers**

7. New recycling processes

SOLUTIONS FOR THE TREATMENT OF COMPLEX WASTE (BATTERIES, WIND TURBINES...) WITH MORE TO COME

Our eco-innovation team, the group's R&D unit, supports manufacturers in their circular economy initiatives. Our services can be divided into 4 levels of support :

Awareness

Our recycling site is a full-size showroom that allows manufacturers to understand the stages of recycling a product.



Investigation

Thanks to our dedicated test center, our team designs and tests recycling processes on an industrial scale.



Implementation

We rely on all of the MTB Group's businesses to help the client implement its circular economy strategy.



Development

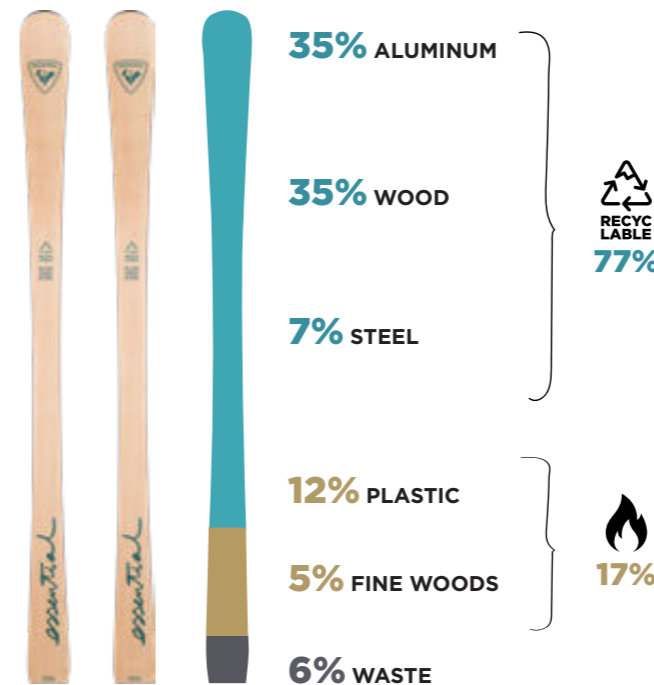
By relying on our network and our expertise, we support manufacturers in the recycling value chain: from the recovery of materials to the eco-design of future products.



An example of support



Jean-Philippe Fusier, President of MTB, Vincent Wauters, President of Rossignol and the eco-designed Essential ski.



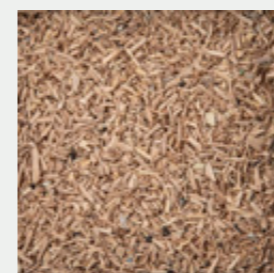
Recyclability rate x10 :

7% → 77%

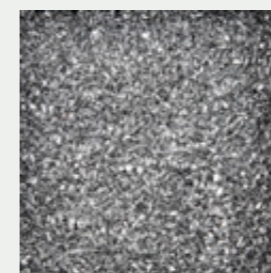
Our eco-innovation team worked with Rossignol to design a ski that is more easily recyclable: «Essential», a wooden ski, from which have been removed: epoxy resin, fiberglass and plastics for easier recycling.

The goal ?

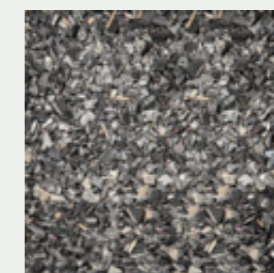
Reduce the number of materials and select only those that are easily recyclable at the end of their life, to promote a circular economy.



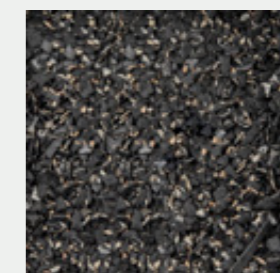
Wood



Aluminum



Steel



Plastic



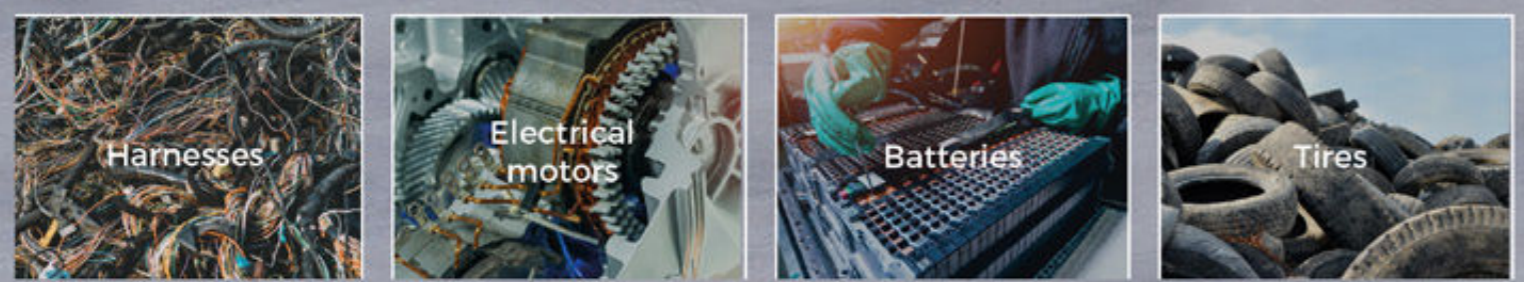
Fine wood

RECYCLING

OF THE AUTOMOTIVE INDUSTRY BY MTB

For several years, MTB has been anticipating the end of life of products resulting from mobility and developing the appropriate machines and industrial processes to recover each component to preserve the planet from resource extraction.

Thermal or electric vehicles, from cables to tires to batteries, each sub-assembly is depolluted and then deconstructed in an exclusively mechanical manner. The goal? To separate the components cleanly in order to produce the purest possible high quality secondary raw materials.



**You have a waste?
We have the solution!**

8. For our children

GO FURTHER TO BECOME AN INDUSTRIAL MODEL

Our purpose



Be efficient at all times

MISSION

2025

Reduce our footprint and reconnect with the living: fauna, flora and humans!

Beyond manufacturing, continue the innovation process by imagining new ways of designing

Raw materials, intellectual, agricultural...

Creator of strategic resources, we are building a sustainable model for our children

Spreading our values and accompanying our partners towards the ecological transition

Within the planetary limits

Ensuring a livable future for new generations

*Renovation and renaturation
Recycling site of Trept*

*Extension of the industrial pole
Saint-Chef equipment manufacturing site*

