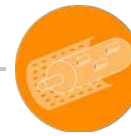




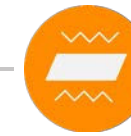
SHREDDING



GRANULATION



AIR DENSITY



SIEVING TABLE



BDR 1245

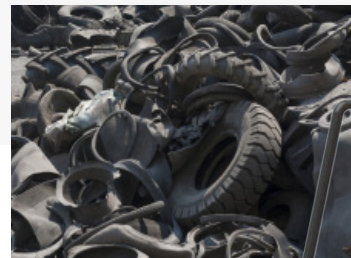
APPLICATION SPECIALTIES



CABLES



SHREDDER WIRES / ASR



TIRES



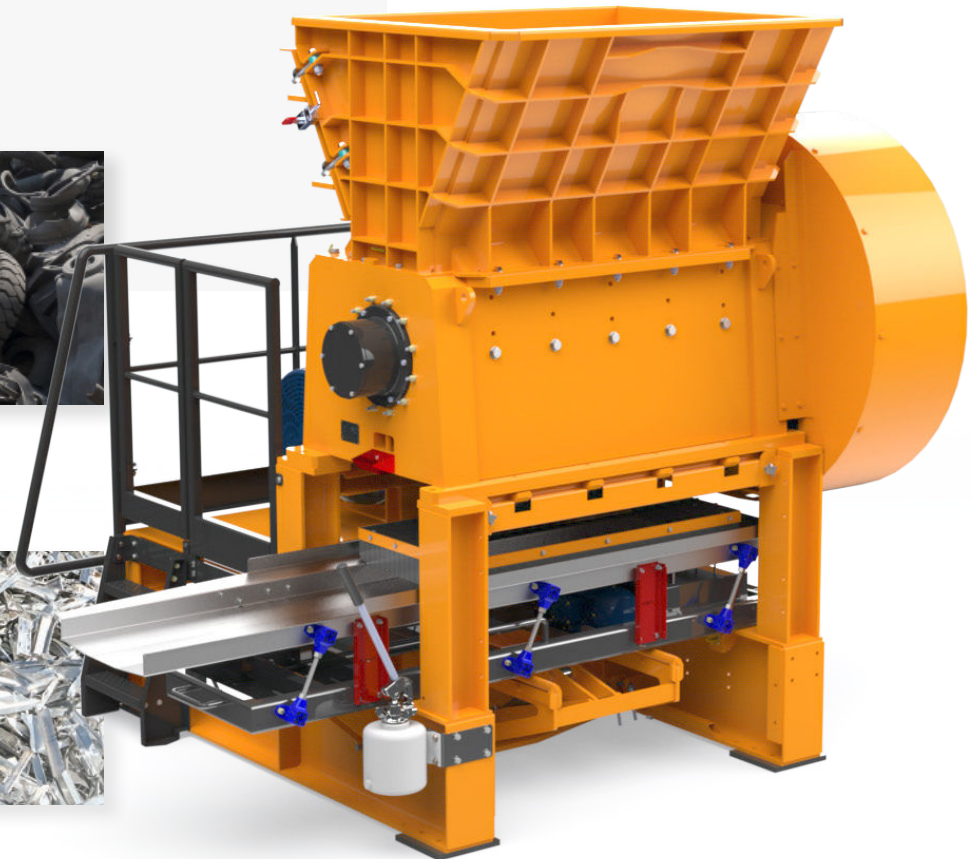
TRANSFORMER WIRES



SMALL RADIATORS



ALUMINUM



MADE IN FRANCE

VERSATILE EQUIPMENT / ROBUST AND RELIABLE / CLEAN AND UNIFORM CUT

✚ The unique features of our BDR shredders allow for the most efficient size reduction of difficult material types at the lowest operating costs on the market.



FLYWHEEL

- 1 t disengageable flywheel
- 40 t of torque at blade tip
- Easy handling of sticking points

TORQUE LIMITER PROTECTION

- Friction disc / clutch

POWER	125 HP / 90 Kw
WEIGHT	7,5 T
CUTTING SPEED	140 - 180 RPM



ROTOR

- Length : 1200 mm (47.2 INCH)

LOW SPEED FOR HIGHER TORQUE

- A more powerful shredder

ROTATING SENSORS

- Protects the belt and transmission in case of jamming



RECTANGULAR BLADES | 28 X 56 X 195 MM

- Reversible 4 times
- Easily accessible blade gapping system
- Proprietary steel alloy



FIXED BLADES | MOBILE BLADES
6 | **18**



SCREENS FROM 10 MM TO 75 MM



EASY MAINTENANCE

- Easy screen replacement thanks to hydraulic assistance
- Easy access for maintenance
- User Friendly

OUR PREMIUM SERVICES

- Customized engineering
- Experience from being operator
- On-site installation and commissioning
- Training on both operation and crane feeding
- Ultra-responsive customer service